

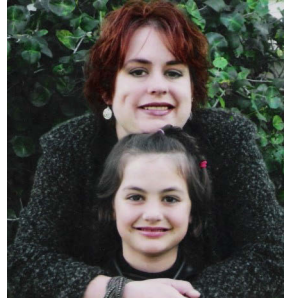
# New Pathways, Inc. .....at a Glance



Serving At Risk Families With Children From Central Minnesota

## What We Do:

- Case management to LTH families in permanent housing
- Partner with churches to provide
  - Private sleeping accommodations
  - Three meals a day
  - Case management
  - Skills training
  - Safe environment



2015-2016

## Mission Statement:

New Pathways, Inc. exists to ensure that the homeless population, specifically families with children, have resources, skills, and assistance necessary to thrive.

## LTH Program

- Families Served since 2010: 28 (FY 15-16:12)
- Adults: 36 (FY 15-16:16)
- Children: 67 (FY 15-16:28)

## The Path To Home Programs

- Families Served since 2000: 940 (FY 15-16:57)
- Adults: 1184 (FY 15-16:75)
- Children: 1663 (FY 15-16:116)



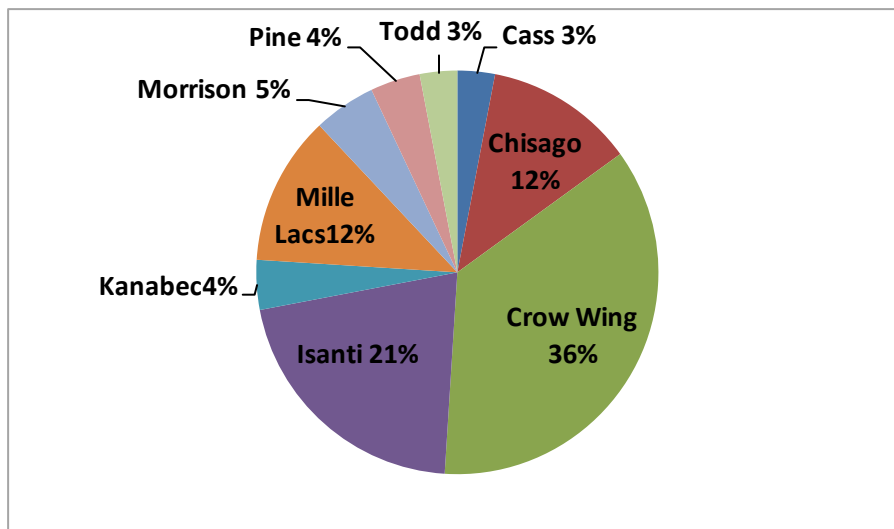
- **Average family size: 3 people**
- **Average length of stay in program: 54 days**
- **87% of Families** leave New Pathways to Permanent Housing

On average:

- 27%** of families are **2 parent** families
- 66%** of families are **single parent moms**
- 4%** of families are **single parent dads**
- 3%** of families are **multigenerational**

New Pathways, Inc partners with **50** area churches.  
Each partner church donates an average of **290 hours** every week!  
Cambridge Site has over **1170 volunteers!**

## Where Our Families Came From



## New Pathways, Inc. Board of Directors

### Officers

Leslie Price, President  
Dick Peterson, Vice President  
Doreen Polzin, Treasurer  
Darla Johnson, Secretary

### Members

Jim Crecelius

### Homeless Advocate

Darla Johnson

### Interim Executive Director

Carla Johnson



## Fiscal Year 2015-2016

